

ECONOMIC BACKGROUND

A Narrative taken from information sourced from the Council's Treasury advisors: Link Group

The third quarter of 2023/24 saw:

- A 0.3% m/m decline in real GDP in October, potentially partly due to unseasonably wet weather, but also due to the ongoing drag from higher interest rates. Growth for the second quarter, ending 30th September, was revised downwards to -0.1% and growth on an annual basis was also revised downwards, to 0.3%;
- A sharp fall in wage growth, with the headline 3myy rate declining from 8.0% in September to 7.2% in October, although the ONS "experimental" rate of unemployment has remained low at 4.2%;
- CPI inflation continuing on its downward trajectory, from 8.7% in April to 4.6% in October, then again to 3.9% in November;
- Core CPI inflation decreasing from April and May's 31 years' high of 7.1% to 5.1% in November, the lowest rate since January 2022;
- The Bank of England holding Bank Rate at 5.25% in November and December;
- A steady fall in 10-year gilt yields as investors revised their interest rate expectations lower.

The revision of GDP data in Q2 to a 0.1% q/q fall may mean the mildest of mild recessions has begun. Indeed, real GDP in October fell 0.3% m/m which does suggest that the economy may stagnate again in Q3. The weakness in October may partly be due to the unseasonably wet weather. That said, as the weakness was broad based it may also be the case that the ongoing drag from higher interest rates is more than offsetting any boost from the rise in real wages.

However, the rise in the flash composite activity Purchasing Managers Index, from 50.7 in November to 51.7 in December, did increase the chances of the economy avoiding a contraction in Q3. The improvement was entirely driven by the increase in the services activity balance from 50.9 to 52.7. (Scores above 50 point to expansion in the economy, although only tepid in this instance.) The press release noted that this was primarily driven by a revival in consumer demand in the technological and financial services sectors. This chimes with the further improvement in the GfK measure of consumer confidence in December, from -24 to -22. The services PMI is now consistent with non-retail services output growing by 0.5% q/q in Q3, but this is in stark contrast to the manufacturing sector where the output balance slumped from 49.2 to 45.9 and, at face value, the output balance is consistent with a 1.5% q/q fall in manufacturing output in Q3.

The 0.3% m/m fall in retail sales volumes in October means that after contracting by 1.0% q/q (which was downwardly revised from -0.8% q/q) in Q2, retail activity remained weak at the start of Q3. That suggests higher interest rates are taking a bigger toll on real consumer spending.

Higher interest rates have filtered through the financial channels and weakened the housing market but, overall, it remains surprisingly resilient with the Halifax house price index recently pointing to a 1.7% year on year increase whilst Nationwide's December data pointed to a -1.8% year on year decrease. However, the full weakness in real consumer spending and real business investment has yet to come as currently it is estimated that around two thirds to a half of the impact of higher interest rates on household interest payments has yet to be felt.

Overall, we expect real GDP growth to remain subdued throughout 2024 as the drag from higher interest rates is protracted but a fading of the cost-of-living crisis and interest rate cuts in the second half of 2024 will support a recovery in GDP growth in 2025.

The labour market remains tight by historical standards, but the sharp fall in wage growth seen in October will reinforce the growing belief in markets that interest rates will be cut mid-2024. Wage growth eased in October much faster than the consensus expected. Total earnings fell by 1.6% m/m, which meant the headline 3myy rate eased from 8.0% in September to 7.2% in October. This news will be welcomed by the Bank of England. Indeed, the timelier three-month annualised rate of average earnings growth fell from +2.4% to -1.2%. Excluding bonuses, it fell from 5.3% to 2.0%. Furthermore, one of the Bank's key barometers of inflation persistence, regular private sector pay growth, dropped from 7.9% 3myy to 7.3%, which leaves it comfortably on track to fall to 7.2% by December, as predicted by the Bank in November.

The fall in wage growth occurred despite labour demand being stronger in October than expected. The three-month change in employment eased only a touch from +52,000 in September to +50,000 in October. But resilient labour demand was offset by a further 63,000 rise in the supply of workers in the three months to October. That meant labour supply exceeded its pre-pandemic level for the first time, and the unemployment rate remained at 4.2% in October. In the three months to November, the number of job vacancies fell for the 17th month in a row, from around 959,000 in October to around 949,000. That has reduced the vacancy to unemployment ratio as demand for labour eases relative to supply, which may support a further easing in wage growth in the coming months.

CPI inflation fell from 6.7% in September to 4.6% in October, and then again to 3.9% in November. Both these falls were bigger than expected and there are clear signs of easing in domestic inflationary pressures. The fall in core CPI inflation from 5.7% to 5.1% in November was bigger than expected (consensus forecast 5.6%). That's the lowest rate since January 2022. Some of the decline in core inflation was due to the global influence of core goods inflation, which slowed from 4.3% to 3.3%. But some

of it was due to services inflation falling from 6.6% to 6.3%. The Bank views the latter as a key barometer of the persistence of inflation and it came in further below the Bank's forecast of 6.9% in its November Monetary Policy Report. This will give the Bank more confidence that services inflation is now on a firmly downward path.

The Bank of England sprung no surprises with its December monetary policy committee (MPC) meeting, leaving interest rates at 5.25% for the third time in a row and pushing back against the prospect of near-term interest rate cuts. The Bank continued to sound hawkish, with the MPC maintaining its tightening bias saying that "further tightening in monetary policy would be required if there were evidence of more persistent inflationary pressures". And it stuck to the familiar script, saying that policy will be "sufficiently restrictive for sufficiently long" and that "monetary policy is likely to need to be restrictive for an extended period of time". In other words, the message is that the MPC is not yet willing to endorse investors' expectations that rates will be cut as soon as May 2024.

Looking ahead, our colleagues at Capital Economics forecast that the recent downward trends in CPI and core inflation will stall over the next few months before starting to decline more decisively again in February. That explains why we think the Bank of England won't feel comfortable cutting interest rates until H2 2024.

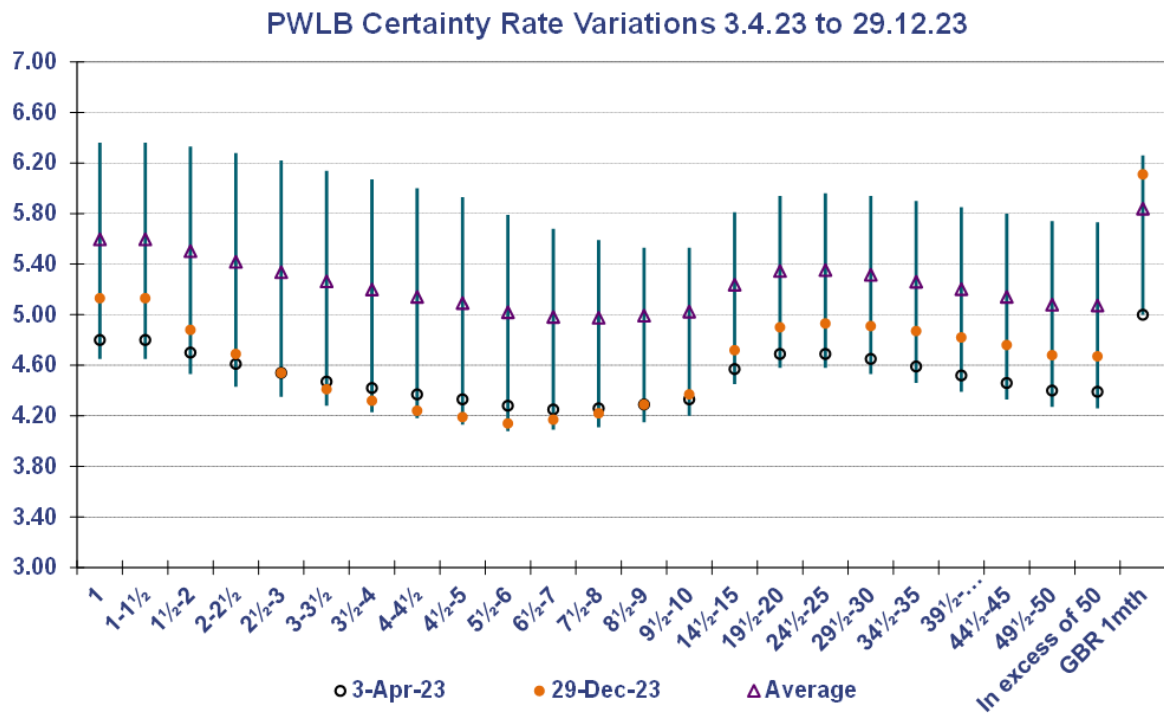
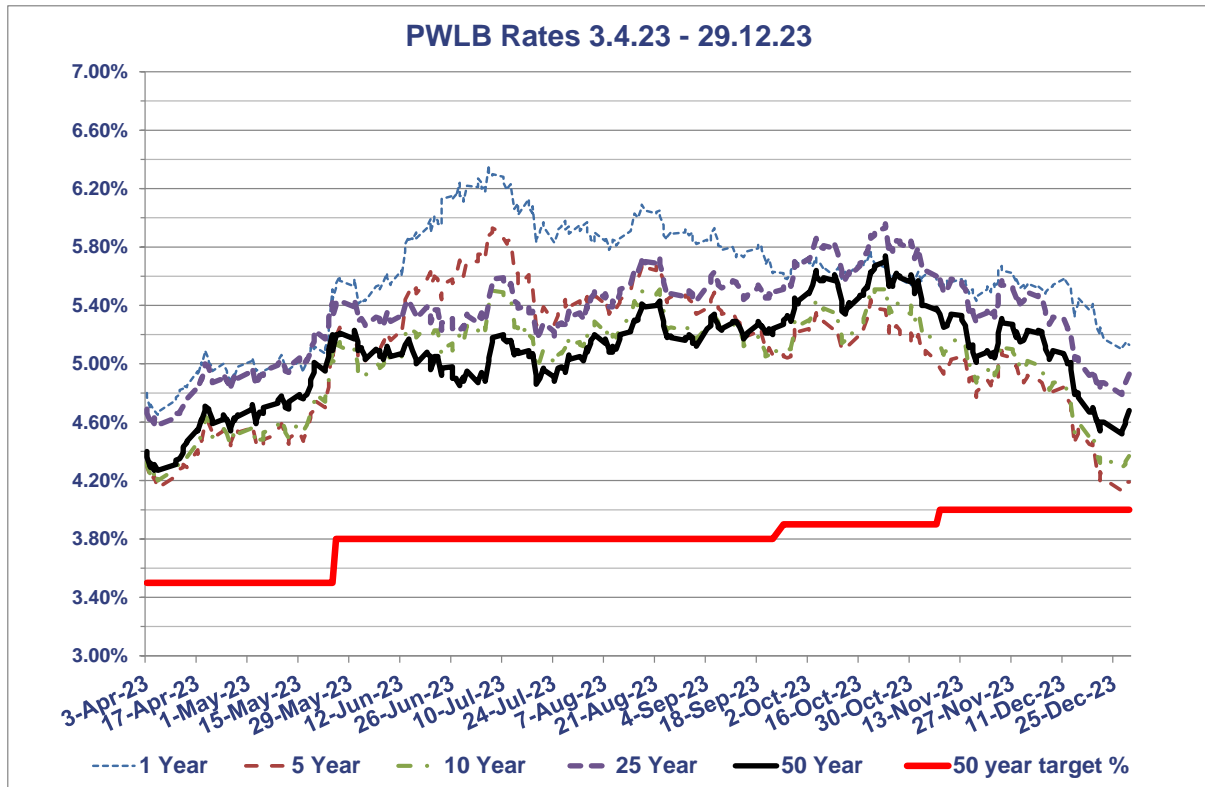
The fall in UK market interest rate expectations in December has driven most of the decline in 10-year gilt yields, which have fallen in line with 10-year US Treasury and euro-zone yields. 10-year gilt yields have fallen from 4.68% in October 2023 to around 3.70% in early January, with further declines likely if the falling inflation story is maintained.

Investors' growing expectations that the Fed will cut interest rates soon has led to an improvement in risk sentiment, which has boosted the pound and other risky assets. In addition, the rise in the pound, from \$1.21 in November to \$1.27 now, has also been supported by the recent relative decline in UK wholesale gas prices.

The further fall in 10-year real gilt yields in December has supported the recent rise in the FTSE 100. That said, the index remains 5% below its record high in February 2023. This modest rise in equities appears to have been mostly driven by strong performances in the industrials and rate-sensitive technology sectors. But UK equities have continued to underperform US and euro-zone equities. The FTSE 100 has risen by 2.2% in December, while the S&P 500 has risen by 3.8%. This is partly due to lower energy prices, which have been a relatively bigger drag on the FTSE 100, due to the index's high concentration of energy companies.

In the chart below, the rise in gilt yields across the curve in the first half of 2023/24, and therein PWLB rates, is clear to see, prior to the end of year rally based on a mix of supportive domestic and international factors.

PWLB RATES 3.4.23 - 29.12.23



HIGH/LOW/AVERAGE PWLB RATES FOR 3.4.23 – 29.12.23

	1 Year	5 Year	10 Year	25 Year	50 Year
Low	4.65%	4.13%	4.20%	4.58%	4.27%
Date	06/04/2023	27/12/2023	06/04/2023	06/04/2023	05/04/2023
High	6.36%	5.93%	5.53%	5.96%	5.74%
Date	06/07/2023	07/07/2023	23/10/2023	23/10/2023	23/10/2023
Average	5.60%	5.09%	5.03%	5.35%	5.08%
Spread	1.71%	1.80%	1.33%	1.38%	1.47%

MPC meetings 2nd November and 14th December 2023

On 2nd November, the Bank of England's Monetary Policy Committee (MPC) voted to keep Bank Rate on hold at 5.25%, and on 14th December reiterated that view. Both increases reflected a split vote, the latter by 6 votes to 3, with the minority grouping voting for an increase of 0.25% as concerns about "sticky" inflation remained in place.

Nonetheless, with UK CPI inflation now at 3.9%, and core inflating beginning to moderate (5.1%), markets are voicing a view that rate cuts should begin in Q1 2024/25, some way ahead of the indications from MPC members. Of course, the data will be the ultimate determinant, so upcoming publications of employment, wages and inflation numbers will be of particular importance, and on-going volatility in Bank Rate expectations and the gilt yield curve can be expected.

In addition, what happens outside of the UK is also critical to movement in gilt yields. The US FOMC has kept short-term rates in the range of 5.25%-5.50%, whilst the ECB has moved its Deposit rate to a probable peak of 4%. Markets currently expect both central banks to start cutting rates in 2024.